

LOXX S

RFID Key Fob



IDENTA AUSWEISSYSTEME GMBH

The key fob LOXX s catches the eye on account of its modern design. The technical specifications guarantee longevity and high efficiency. According to this the key fob's area of use is extremely versatile. The LOXX s offers the highest levels of security.

DETAILS

- ultra-welded processing of impact-resistant polycarbonate and stainless steel frame withstands high forces
- waterproof
- eyelet cannot break out
- dimensions:
total Ø ca. 37 mm
thickness 7,7 mm
length 42,1 mm
- temperature range up to 100°C
functionality -20°C ... +55°C
(technology-dependent)
- works passively
- data transmission: contactless
- degree of protection: IP65
- humidity: 0 – 95% rH, non-condensing

APPLICATIONS

- access control
- time capture
- BDE-based applications
- personal identification
- IoT (Internet of Things) applications

ADVANTAGES

- award-winning design
- convex
- high-gloss surface
- high-quality marking with laser engraving
- detectable

TECHNOLOGIES

- LEGIC
- MIFARE
- HITAG
- TagIT
- EM



and other common RFID/NFC technologies, also as combination of several technologies (hybrids).



product design award

2011

loxx s



CONTACTLESS KEY FOB

IDENTA AUSWEISSYSTEME GMBH
Steinkirchring 16
D-78056 Villingen-Schwenningen

www.identa.com
info@identa.com
fon +49 (0) 7720 3909 0

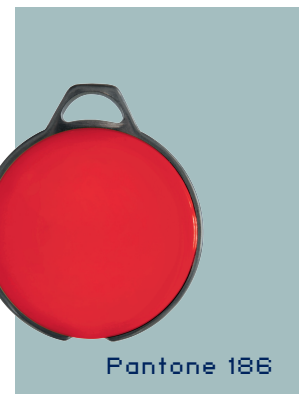
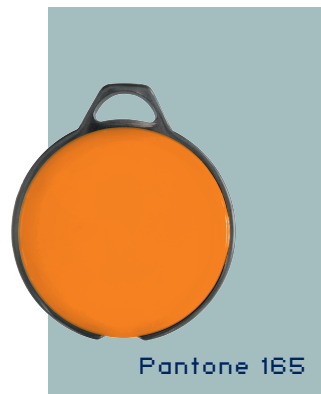
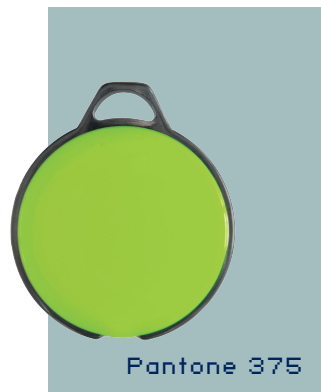
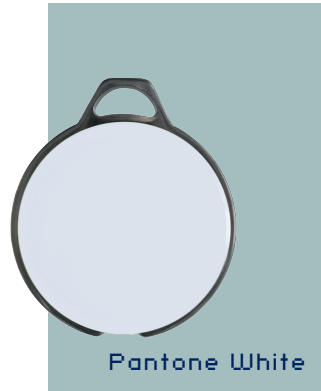
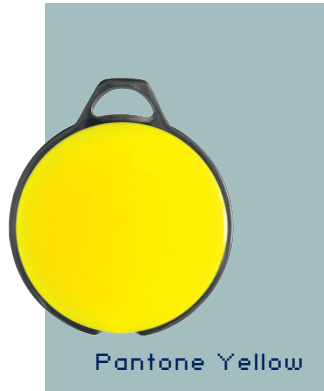


SHORT OVERVIEW

with color name

IDENTA

IDENTA AUSWEISSYSTEME GMBH



IDENTA AUSWEISSYSTEME GMBH
Steinkirchring 16
D-78056 Villingen-Schwenningen

Subject to technical changes. 11-09-23

www.identa.com
info@identa.com
fon +49 (0) 7720 3909 0

